



157 W. METZLER RD.
PO BOX 787
717.859.3201

West Earl Township

FALL/WINTER

NOVEMBER 2012

INSIDE THIS ISSUE:

Utility Billing	1
Leaf Collection	1
Storm Water	2
Thank a Vet	3
Snow Removal	3
Welcome	3



Daylight Savings Time ends on November 4, 2012. Turn your clocks back one hour at 2:00 am. Fire officials ask that when you "fall back" you also remember to change the batteries on your smoke detectors.

Utility Billing Changes



In the upcoming months, the utility bills you receive from West Earl Township will be changing. In order to make bill payment easier for you, our customers, we will begin to bill all utilities on a monthly basis. Once all the bills are on a monthly bill cycle, all utilities billed from the West Earl Township office will then be combined onto one invoice.

Our goal is to provide you the opportunity to manage your household budget more easily, and to simplify payments to our office.

This change in billing requires many steps and we ask your patience while we work through the process. You will be receiving notifications in the mail as we make the changes.

Refuse/Recycling Customers who have not paid annually or semi-annually will receive a one month bill in December for the month of December. Customers who have paid the yearly

rate or semi-annual rate will receive a notification in the mail regarding the billing change.

Water Customers will receive the regular quarterly bill in January for the months of October, November and December. February's bill will be for the single month of January.

Sewer Customers will see no change in billing until all the bills are combined onto one invoice.

The office staff has been working on this billing project for many months; and anticipates a smooth transition to the monthly billings.

Online payments are now accepted. Please visit our website at www.westearltwp.org and click on the link at the top of the page for more details.

Leaf Collection Schedule

Leaf Collection began on Monday, October 15, 2012 and will continue through Friday, December 7, 2012 (this date may be subject to change). No leaves will be collected Wednesday, November 20th through Friday, November 30th.

To prepare your leaves for pickup:

- Rake leaves into a row (not a pile) 3 to 4 feet wide along the front edge of your property.
- Do not mix trash, other yard waste or grass with the leaves.
- Do not cover leaves with a tarp or park a vehicle over them.

The leaf collection truck makes one pass through the Township per week. Where they stop collecting one day is where they begin collecting the following day and continue that process each day until they have been through the entire Township. This will be done each week during the leaf collection schedule dates mentioned above.



Storm Water Runoff and Pollution Solutions

Storm Water Runoff

What is storm water runoff?

Storm water runoff occurs when precipitation from rain or snowmelt flows over the ground. Impervious surfaces like driveways, sidewalks, and streets prevent storm water from naturally soaking into the ground.

Why is storm water runoff a problem?

Storm water can pick up debris, chemicals, dirt, and other pollutants and flow into a storm sewer system or directly to a lake, stream, river, wetland, or coastal water. Anything that enters a storm sewer system is discharged untreated into the water bodies we use for swimming, fishing, and providing drinking water.

Storm Water Pollution Solutions

Polluted storm water runoff can have many adverse effects on plants, fish, animals, and people. The following are several solutions to storm water runoff pollution. *Some solutions may only apply during the spring and summer months.*

Lawn Care



Excess fertilizers and pesticides applied to lawns and gardens wash off and pollute streams. In addition, yard clippings and leaves can wash into storm drains and contribute nutrients and organic matter to streams.

- Don't overwater your lawn. Con-

sider using a soaker hose instead of a sprinkler.

- Use pesticides and fertilizers sparingly. When use is necessary, use these chemicals in the recommended amounts. Use organic mulch or safer pest control methods whenever possible.
- Compost or mulch yard waste. Don't leave it in the street or sweep it into storm drains or streams.
- Cover piles of dirt or mulch being used in landscaping projects.

Auto Care

Washing your car and degreasing auto parts at home can send detergents and other contaminants through the storm sewer system. Dumping automotive fluids into storm drains has the same results as dumping the materials directly into a water body.



- Use a commercial car wash that treats or recycles its wastewater, or wash your car your so the water infiltrates into the ground.
- Repair leaks and dispose of used auto fluids and batteries at designated drop-off or recycling locations.

Septic Systems

Leaking and poorly maintained septic systems release nutrients and pathogens (bacteria and viruses) that can be picked up by storm water discharged into nearby water bodies. Pathogens

can cause public health problems and environmental concerns.

- Inspect your system every 3 years and pump your tank every 3 years (West Earl has an on-lot management program)
- Don't dispose of household hazardous waste in sinks or toilets.

Pet Waste

Pet waste can be a major source of bacteria and excess nutrients in local waters.

- When walking your pet, remember to pick up the waste and dispose of it properly. Flushing pet waste is the best disposal method. Leaving pet waste on the ground increases public health risks by allowing harmful bacteria and nutrients to wash into the storm drain and eventually into local water bodies.



For more information about storm water visit the PA Department of Environmental Protection website at www.depweb.state.pa.us

Recycle or properly dispose of household products that contain chemicals, such as insecticides, pesticides, paint, solvents, and used motor oil and other auto fluids. Don't pour them onto the ground or into the storm drains.



“Thank a Vet” Discount Program



Beginning in November 2012, Bonnie Bowman, Recorder of Deeds of the County of Lancaster will be launching a “Thank a Vet” Discount Program. This program will provide a photo ID, FREE OF CHARGE, to Lancaster County veterans who have their DD-214 honorable discharge papers filed on record in the Recorder of Deeds office.

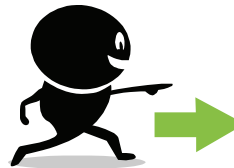
Participating merchants will agree to honor the card by providing special discounts on purchases or services. A Poster or decal will be provided to participating merchants to proudly show their support of our Lancaster County veterans. A listing of all participating businesses will be available on the Lancaster County Recorder of Deeds website. Further information is available at www.lancasterdeeds.com or by contacting the Recorder of Deeds Office, 150 N. Queen Street, Lancaster, Pa. phone 299-8240 or email bbowman@co.lancaster.pa.us

NEW TOWNSHIP MANAGER

The Board of Supervisors and Township staff would like to welcome the Township’s new Manager, Kevin Tobias. Kevin comes to us from Wyomissing Borough with 16 years of Municipal Government experience. Kevin lives in the Reading area with his wife, 3 kids and 2 dogs. We look forward to working with Kevin in the years to come.



*Attention trash customers:
Look for the new trash collection
calendar in your upcoming,
December refuse/recycling bill.*



Snow Removal Procedures

The winter season is approaching and the Public Works Department would like to remind you of the general policy for snow removal. Each winter storm event could be cause for change however.

The major roads are attended to first, followed by residential streets. Salt and anti-skid material is spread onto the roadway at the onset of the storm. When the snow accumulates to around 3 inches, the center of the road will be plowed one pass in each direction. This process may be repeated several times throughout the duration of the storm. As the storm ends streets will be plowed to their full width. Keep in mind that when you clear your driveway or sidewalk there is a possibility of snow getting onto areas that you have cleared.

In our attempt to clear the snow from the roads, plowed snow occasionally damages mailboxes and plastic fences. Wet, heavy snow and slush increases the chance for damage to occur. To reduce the potential for damage to your mailbox make sure that it is tightly secured on a solid post. Residents are reminded that mailbox damage occurring from the plowed snow is the responsibility of the property owner. The Public Works De-

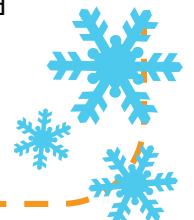
partment will make every effort to avoid causing any damage.

Residents who live along a designated snow emergency route must remove their vehicles from the street when a snow emergency has been declared by the Township.

Additional reminders during snow events:

- Do not push or blow snow onto the roadway. This creates hazardous driving conditions.
- Please park vehicles off the street whenever possible. Once the crew has finished widening the street, they will not return to clear parking spaces.
- It is recommended that you wait to clear your sidewalk until after the crew has widened the street. This will prevent the need for additional shoveling of the sidewalks.
- Drive carefully on snow and ice covered streets.

Any questions, please contact the Director of Public Works at 717-859-3201.



West Earl Township
PO BOX 787
Brownstown, PA 17508

Presorted
First-Class Mail
U.S. POSTAGE
PAID
Ephrata, PA
Permit No. 1



Meetings

West Earl Board of Supervisors

*Meets the 2nd and 4th Monday of every month at
7:00pm*

West Earl Planning Commission

Meets the 3rd Tuesday of every month at 7:00pm

West Earl Parks and Recreation Board

*Meets the 3rd Monday of every month as needed at
7:00pm*

West Earl Zoning Hearing Board

*Meet 1st Wednesday of the month as needed at
7:30pm*

West Earl Sewer Authority

Meets the 2nd Wednesday of every month at 7:00pm

West Earl Water Authority

Meets the first Monday of every month at 7:00pm



Important Phone Numbers

- Municipal Office 859-3201
- Fax Number 859-3499
- Tax Collector 556-8294
- Water & Sewer Dept
(after hours) 859-3725
- Police Department 859-1411
- Emergencies 911
- Zoning Officer 859-3201
(Wed. 9am-12pm)
- Sewage Enforcement 824-4618

